

# *The* American Journal of Cardiology

## *ST-Elevation Myocardial Infarction in Patients $\leq 35$ Years of Age*

*Virginia Ruiz Pizarro MD, Julián Palacios-Rubio MD, Alejandro Cruz-Utrilla MD, Daniel García-Arribas MD, María José Pérez-Vizcayno PhD, Antonio Fernández-Ortiz PhD, Iván Javier Núñez-Gil PhD*

*American Journal of Cardiology*

Volume 123, Issue 6, Pages 889 – 893 (March 2019)

DOI: 10.1016/j.amjcard.2018.12.017



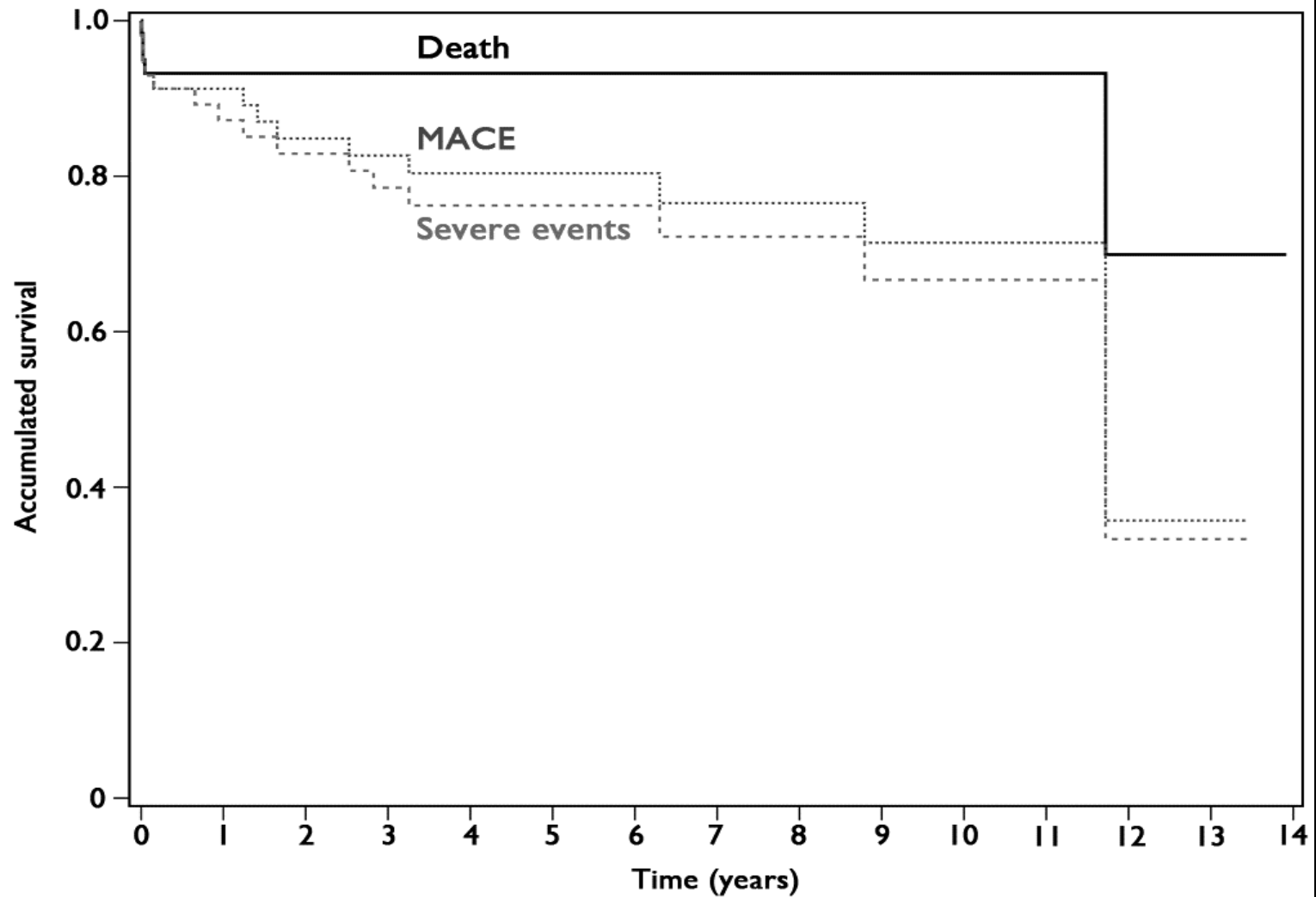
**Table 1. Demographic characteristics and risk factors in patients ≤ 35 of age.**

<b>Description</b>	<b>Patients n=61</b>
Age (years)	32±3
Male vs. Female	54 (88%) vs. 7 (12%)
BMI (Kg/m <sup>2</sup> )	27±5
Hypertension	10 (16%)
Diabetes Mellitus	9 (15%)
Smoker	49 (80%)
Current smoker	46 (75%)
Former smoker	3 (5%)
Dyslipidemia*	20 (32%)
BMI>25 Kg /m <sup>2</sup>	41 (67%)
BMI>30 Kg /m <sup>2</sup>	15 (24%)
Prior AMI	1 (1.5%)
Family history of CAD	12 (20%)
HIV	2 (3%)
Drugs	16 (26%)
Hypercoagulable states**	8 (13%)

AMI: acute myocardial infarction; BMI: body mass index; CAD: coronary artery disease; HIV: human immunodeficiency virus.

\* Known hypercholesterolemia or hypertriglyceridemia;

\*\*Rheumatoid disease, coagulation abnormalities or hormonal contraceptives.



Accumulated survival curves (in years) for overall mortality (solid black line), MACE (dotted line) and severe events (dashed line).



**Table 2.** Prevalence of modifiable cardiovascular risk factors in the study cohort compared with a general similar aged population.

<b>Description</b>	<b>Patients aged <math>\leq 35</math> (n=61)</b>	<b>Reference population (n=5148)</b>	<b>p value</b>
Hypertension	10 (16%)	830 (16%)	0.95
Diabetes Mellitus	9 (15%)	85 (2%)	<0.001
BMI>25 Kg /m <sup>2</sup>	41 (67%)	748 (15%)	<0.001
Current smoking	46 (75%)	2406 (47%)	<0.001
Dyslipidemia*	20 (32%)	171 (3%)	<0.001

BMI: body mass index. \* Known hypercholesterolemia or hypertriglyceridemia.

**Table 3.** Index event clinical patterns.

Description		Value
GRACE ischemic risk score		107±30
CRUSADE bleeding risk score		12±10
Fibrinolytic treatment before angiography		8 (13%)
Killip class on admission	I	52 (85%)
	II	5 (8%)
	III	0
	IV	4 (7%)
PCI procedure	Vascular access	
	<i>Radial</i>	18 (29%)
	<i>Femoral</i>	42 (69%)
	<i>Others</i>	1 (1,5%)
	Initial TIMI flow (0/1/2/3)	40/3/5/13
	Intracoronary imaging (OCT/IVUS)	11 (18%)
	Stent implantation (total)	51 (84%)
<i>DES</i>	37 (73%)	

\* Normal value <0.05 ng/dL. AV: atrioventricular; BMS: bare metal stent; DES: drug eluting stent; LVEF: left ventricular ejection fraction; MI: myocardial infarction; OCT/IVUS: optical coherence tomography / intravascular ultrasound; PCI, percutaneous coronary intervention.

	<i>BMS</i>	14 (27%)
	Stent size (mm)	3.29±0.5
	Stent length (mm)	22.3±10.1
	Thrombus aspiration	17 (28%)
	Anti IIb/IIIa	42 (70%)
Culprit coronary artery	Left main coronary	0
	Left anterior descending	40 (67%)
	Right coronary artery	15 (25%)
	Circumflex coronary artery	5 (8%)
	Other	1(1.5%)
Coronary artery occlusion mechanism	<u>Atherothrombotic</u>	61 (100%)
	Spontaneous coronary artery dissection	0
	Embolic	0
Peak troponin I, ng/dL *		49 (24-158)
LVEF (%)	Mean	51±14
	>50	34 (56%)
	35-50	20(33%)
	<35	7 (11%)

Complications	Death	3 (5%)
	Heart Failure or Cardiogenic Shock	10 (16%)
	In-hospital cardiac arrest	3 (5%)
	Stroke	1 (1.5%)
	Complete AV block	1 (1.5%)
	Post MI pericarditis	1 (1.5%)
	Renal failure	1 (1.5%)
	Vascular access	0